

**NOTES:**

A) STANDARD LENGTHS:  
 16-1/2" OLSON #127CGT165  
 24" OLSON #127CGT24

B) TAPPED HOLES IN TOP FLANGE RING ARE LOCATED ON CENTERLINE OF OPENINGS. TOLERANCE:  $\pm 3/16"$

C) OPENINGS LOCATED 180 DEGREES APART. TOLERANCE:  $\pm 1$  DEGREE. OPTIONAL HOLE SIZES AND/OR LOCATIONS MUST BE SPECIFIED WHEN ORDERING.

D) PLYWOOD COVER FOR L-867 IS 1/2" THICK GRADE CC WITH 7/16" DIA. BOLT HOLES

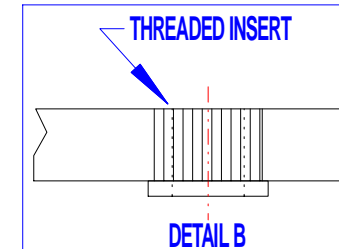
NOTE: PLYWOOD THICKNESS RUNS UNDERSIZE 1/2" - ACTUAL 15/32  $\pm 0-1/32"$

A GALVANIZED STEEL COVER (3/4" THICK MAXIMUM), PURCHASED SEPARATELY, MAY BE SUBSTITUTED FOR PLYWOOD COVER.

F) OPTIONAL STEEL LUG FOR GROUNDING PROVISION AND/OR DRAIN COUPLING OR WEEP HOLE MUST BE SPECIFIED WHEN ORDERING.

G) FINISH IS HOT DIP GALVANIZE, ASTM A386 C1.A.

H) (6) 3/8-16" X 1" STAINLESS STEEL HEX HEAD BOLTS SHIPPED WITH L-867 LIGHT BASE.



GROUND LUG	EGL		IGL			
PLYWOOD THICKNESS	STD.		OTHER			
ANTI-ROTATION FINS	#		HT./LOCATION			
DRAIN HOLE & TYPE	SIZE				OTHER	
OPENING LOCATION		0'	90'	180'	270'	
OPENING SIZE	STD 2"					
	OTHER					
STACKED	#					
OPENING HT. ****	STD					
STD. -2-1/2" FROM BTM	OTHER					

**PAT. # 6,550,931 B1**

DRAWN BY: TLK	TITLE: L-867B LIGHT BASE WITH THREADED INSERTS - 12" DIA.	<b>OLSON INDUSTRIES, INC.</b> ATKINSON, NE 68713 PKG. NO.: 2.0 MODEL NO.: 127CG PART NO.: SEE NOTE A ABOVE
APPR. BY: TOJ	MAT. SPEC.: A-36 STEEL	
DATE: 08/01/2001	NEXT ASSEM. IS: -----	
SCALE: 8:1	UNLESS OTHERWISE SPECIFIED DIMENSIONS ARE IN INCHES	
FILE NAME: 127CGT24	FRACTIONS $\pm 1/32"$ DECIMALS $\pm 0.030"$ ANGLES $\pm 0.5$ Deg.	