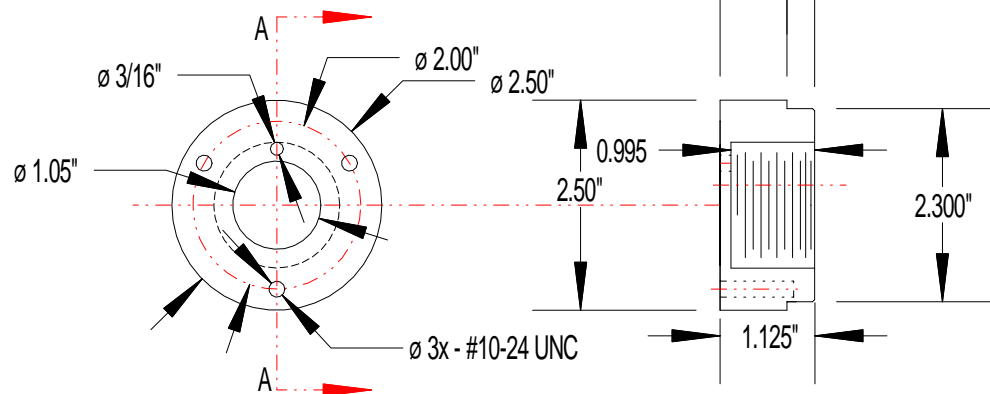


	"AA"	"BB"	"CC"	"DD"	TAP	OLSON #
L867B	12"	10.25	7.875	.625	1-1/2"-12	127B015
L867D	16"	14.25	11.125	.750	1-1/2"-12	167B015

**NOTES:**

- A) FINISH IS OXIDE PRIMER AND AVIATION YELLOW ENAMEL.
- B) BASEPLATE INDIVIDUALLY PACKED WITH NEOPRENE GASKET, STEEL CABLE CLAMP AND SCREWS FOR SECURING L-823 CONNECTOR AND ASSEMBLY INSTRUCTIONS.



**SECTION "AA"**

Redesigned 2/05/04

DRAWN BY: TOJ/VR	TITLE: L-867 1-1/2" BASEPLATE	OLSON INDUSTRIES, INC.
APPR. BY: TOJ	MAT. SPEC.: 11 GA. CORTEN	ATKINSON, NE 68713
DATE: 04/04/1997	NEXT ASSEM. IS: -----	PKG. NO.: 46.1
SCALE: NONE	UNLESS OTHERWISE SPECIFIED DIMENSIONS ARE IN INCHES	MODEL NO.: 7B
FILE NAME: 12767B015	FRACTIONS± 1/32" DECIMALS± 0.030" ANGLES± 0.5 Deg.	PART NO.: SEE CHART ABOVE