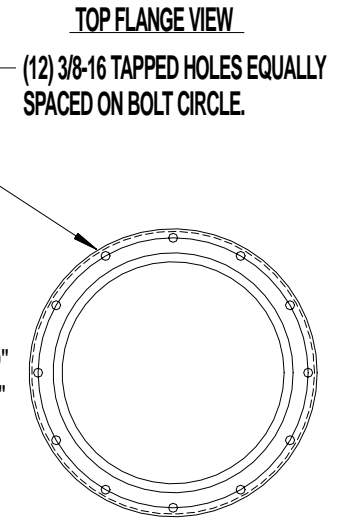
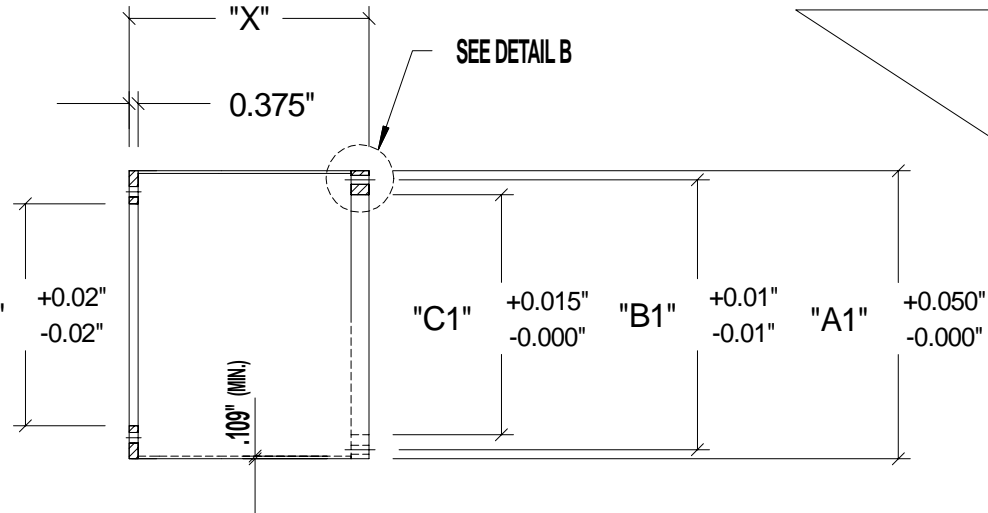


TYPICAL CENTERLINE INSTALLATION IS SHOWN



NOTES:

- A) FINISH IS HOT DIP GALVANIZE,
ASTM A386 C1.A.
- B) PLYWOOD SHIPPING COVER FOR L-868
TOP SECTION IS EXTERIOR GRADE CC.

L-868 10" NOM. O.D. : 10-3/8" DIA. X 3/4" THICK
 L-868 12" NOM. O.D. : 12-3/8" DIA. X 3/4" THICK
 L-868 15" NOM. O.D. : 15-3/8" DIA. X 3/4" THICK

NOTE: PLYWOOD THICKNESS RUNS UNDERSIZE:
 3/4" - ACTUAL 23/32 +0/-1/32"

- C) (6) 3/8-16 X 1" STAINLESS STEEL BOLTS
AND CEC LOCKWASHERS SHIPPED WITH
L-868 TOP SECTION.

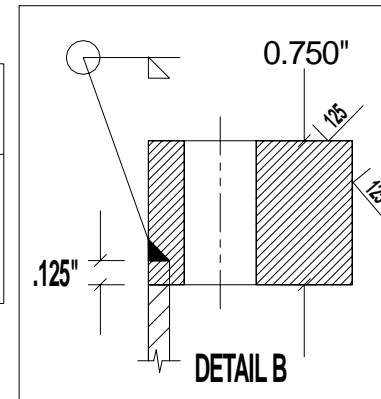
- D) OPTIONAL EQUIPMENT: (3) OR (4) ANTI-ROTATION
FINS (3/16" X 3/4" X 3") OR LOAD RING MUST
BE SPECIFIED WHEN ORDERING.

- E) "X" DIMENSION IS TO ORDER (2.0" MINIMUM)
WHEN USED AS TOP SECTION IN OVERLAY PAVING.

L-868 10" NOM. O.D. : OLSON #108TS(X) (X=HEIGHT TO ORDER)
 L-868 12" NOM. O.D. : OLSON #128TS(X) (X=HEIGHT TO ORDER)
 L-868 15" NOM. O.D. : OLSON #158TS(X) (X=HEIGHT TO ORDER)

	NOM. DIA.	"A1"	"B1"	"B2"	"C1"	"C2"
L-868	10"	10.000	9.250	8.250	8.000	6.000
L-868	12"	12.000	11.250	10.250	10.000	9.250
L-868	15"	15.000	14.250	13.250	13.000	12.375

LOAD RING**	YES	NO
PLYWOOD THICKNESS	STD.	OTHER
ANTI-ROTATION FINS	#	
HT./ LOCATION		



Updated 5/28/02
 Updated 1/03/03

DATE:	10/09/96	TITLE:	L-868 TOP SECTION 10",12",15" DIAMETER	OLSON INDUSTRIES East Hwy 20, Atkinson, NE 68713
SCALE:	1/8"=1"	MAT. SPEC:	UNLESS OTHERWISE NOTED, DIMENSIONS ARE IN INCHES	PACKAGE NO.: 13.0
DRAWN BY:	TLK	FRACTIONS +/-	DECIMALS +/-	ANGLES +/-
APPROVED:	TOJ			MODEL NO.: 8TS
FILE NAME:	12858TS.CAD			PART NO.: SEE NOTE E ABOVE